

ECONOMY
INNOVATION

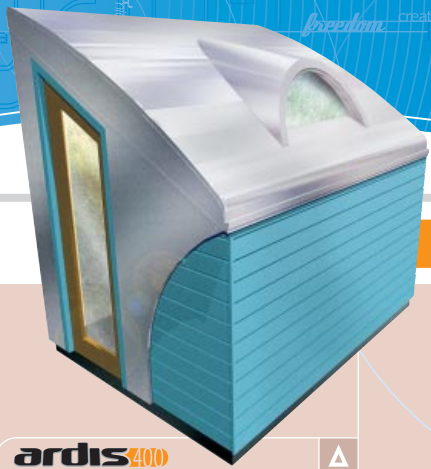
freedom

freedom creativity

light

ardis

the 'work from home' garden office

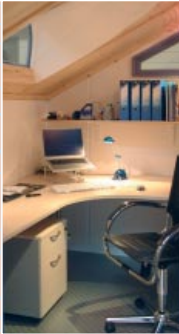


400



ardis 400

- INTERNAL DIMENSIONS 2.2M X 1.6M (7' X 5')
 - KEY SPECIFICATIONS **MOULDED ROOF DESIGN**
 - HIGH-LEVEL ROOF LIGHT
 - UNDER 10M³ WHICH MEANS THAT IN MOST CASES THE ARDIS 400 CAN BE ERECTED WITHIN THE CURTILAGE OF LISTED BUILDINGS, IN NATIONAL PARKS, A.N.O.B'S AND WITHIN 5 METRES OF A DWELLING HOUSE WITHOUT PLANNING PERMISSION
 - A SELECTION OF PERGOLAS, SEATING AND TRELIS OPTIONS ARE AVAILABLE
- FURNITURE SPECIFICATIONS
- WE HAVE DESIGNED A HIGHLY EFFICIENT LAYOUT TO MAXIMISE THE USE OF SPACE IN THE ARDIS 400. A SPECIFIC RANGE OF FURNITURE AND OFFICE TECHNOLOGY IS INCLUDED IN THE PRICE. PLEASE SEE THE 400 LEAFLET OR OUR WEBSITE FOR FULL SPECIFICATIONS.



The Ardis 400 interior allows the light to pour in and feels far larger than it's compact size.

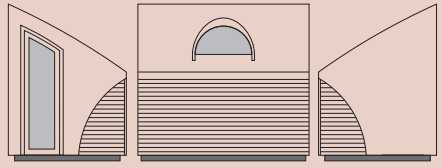
ardis – the award winning garden office*

The Ardis is a relocatable professional office offering a low cost and tax advantageous alternative to a home extension. The patented modular construction with its own foundations (no builders or concrete required) enables most models to be erected in one day with the minimum of fuss in the most inaccessible of places. The well insulated double glazed Ardis comes complete with electrics, heating, lighting, carpets and furniture.

JUST PLUG IN AND WORK!

why pay rent?

Why not choose a low cost flexible leasing option from Ardis – see the price list and website for the latest details.



ABOVE: A typical 400 configuration.

SUPPLIED AS STANDARD WITH 400

- ✓ Ergonomically designed versatile and elegant furniture including under desk pedestal and task operator chair.
- Solid wood shelving 32 mm thick with clear stain finish to match furniture and ceiling.



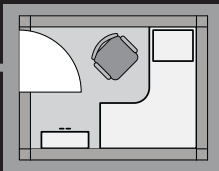
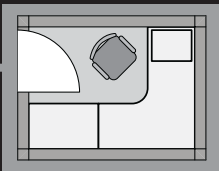
* Times and Gesteiner Digital Office Collection.

 01647 432575
for further information or to place an order for an **ardis**

ardis 400

detailed specifications

- ✓ **INTERNAL DIMENSIONS :** 2.215m x 1.630m (approx. 7' 3" x 5' 4")
- ✓ **FOUNDATIONS :** Preservative treated timber sleepers.
- ✓ **FLOOR :** Plywood flooring on timber joists, polythene vapour barrier and insulation.
- ✓ **WALLS :** MDF inner face with white textured finish, CLS timber studwork, vapour barrier, insulation, breather paper, cavity zone.
- ✓ **EXTERNAL CLADDING :** Wood based, exterior quality board, horizontally profiled to Ardis's own high specification. GRP roof extends over both ends. Guaranteed for 10 years.
- ✓ **ROOF :** Curved roof manufactured in maintenance free GRP with integral gutter, insulation, vapour barrier, breather membrane and natural timber lining to vaulted ceiling.
- ✓ **ROOF WINDOWS :** 1 x laminated double glazed curved window fixed into roof structure.
- ✓ **WINDOWS & DOORS :** High quality fully draught stripped softwood door double glazed with clear laminated glass as standard. Fully glazed door has a storm proof mobility threshold. Multi-point locking system for added security to BS 3621. 1 x high level angled window, double glazed with laminated glass.
- ✓ **PRESERVATIVE :** Where required timbers will be preservative treated. Generally external timbers and timber in contact with the ground will be pressure impregnated with c.c.a. (Tanalith or Celcure).
- ✓ **DECORATION :** Windows and doors would be finished with 'Sadolin Superdec' to a colour of your choice. External cladding would be finished with 'Sadolin Superdec' to a colour of your choice. Internal walls have a white vinyl textured finish and the timber ceiling has a clear matt lacquer.
- ✓ **VENTILATION :** Wall mounted fresh air ventilator.
- ✓ **HEATING & ELECTRICS :** 3 x low energy adjustable dichroic luminaires mounted on tensioned wires at ceiling level. Thermostatically controlled wall mounted 0.75kW panel convector heater with timer. Desk top mounted cable management system comprising of three electrical sockets and two data points. 1 x wall mounted power socket. 1 x consumer unit.
- ✓ **CARPET :** Wall to wall fitted carpet in a choice of colours. Carpet is general contract cord with a rot proof, water resistant gel backing. Alternatively, vinyl may be supplied as an optional extra.
- ✓ **FURNITURE & SHELVEING :** 1 x task operator chair with arms, safety gas lift, back rest height adjustment, seat tilt and choice of colour.
- ✓ 2.2 x 1.6 (7' x 5') continuous curved workstation with mobile under desk 2 drawer pedestal (1 x pen drawer and 1 x filing drawer).
- ✓ 1.6m (5') solid wood shelving 32 mm thick with clear stain finish to match furniture and ceiling.



▲ STANDARD OFFICE PACK

▲ OPTIONAL LAYOUT

The Ardis 400 is designed to maximise space and comes complete with the highest quality ergonomic modular furniture. You also have the option to choose alternative configurations for a small additional cost.



Do not forget that our professional design team are on hand to advise and help you choose your own particular furniture layout or even your own special sized individual building – our unique modular system allows you to decide your own building size and design your own furniture layout.

your guarantee

ROOF | WALLS | FOUNDATIONS > 10 YEARS

FURNITURE | ELECTRICAL EQUIPMENT | FIXTURES AND FITTINGS > 12 MONTHS



01647 432575

for further information or to place an order for the **ardis**



www.ardisdesign.co.uk

ardis

42 THE SQUARE, CHAGFORD, DEVON TQ13 8AH

TEL: 01647 432575 FAX: 01647 432676

e-mail: info@ardisdesign.co.uk

DESIGN & PRODUCTION : AIRSHIP 01566 784128 : www.air-ship.co.uk
PRINT : BLUE SKY, BARNSTAPLE E & OE Ardis Design Limited 2003

HAVE YOU RECEIVED THE PRICE LIST?
LATEST PRICES AND OPTIONS ARE
AVAILABLE ONLINE

